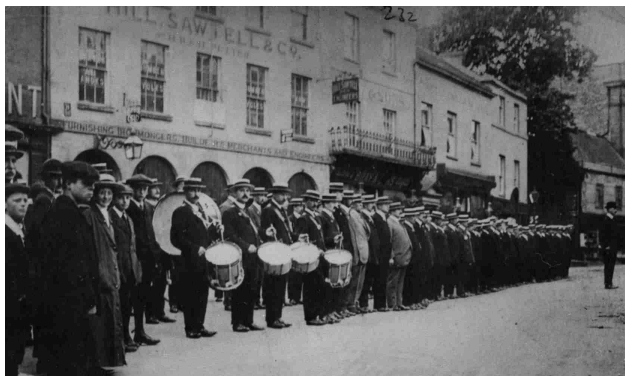


4 Newnam Memorial Hall Alongside Yeovil Baptist Church - and marked by a plaque - the hall was used during the Great War as a hospital by the Red Cross. It treated 1,200 casualties of the conflict with, amazingly, only four dying. Continue for 50 yards, past a mini-roundabout and towards the entrance to a car park before turning right into Waterloo Lane, where you will pass the:

5 Petters Bollard The last piece of cast iron surviving in Yeovil from the Petter and Edgar's Iron Foundry. It's also the site of a former gloving factory (now a recruitment agency). Follow Waterloo Lane as it turns right. With Tesco - formerly Yeovil Town FC's famously sloped Huish ground - on your left, you will see Clarence Street ahead - once home to Brutton's Brewery. Turn right along Westminster Street, past the Millennium Clock and into High Street, past - on the left - Yeovil's oldest pub, the Mermaid (first recorded in 1517) and then, on the right (now Superdrug), the former site of Hill Sawtell & Co (Petters) ironmongers (pictured below). On your left is:



6 Yeovil War Memorial Erected in 1921 it features over 200 names of Yeovil residents killed in the First World War, including 17-year-old Walter Adams, whose magnificent studio portrait picture is on the cover of this guide. Go through alley between shops and onto the church green. Enter:

7 St John's Church to see, in front of you on the north aisle, The Prowse Window, dedicated in 1917 to two fallen brothers - Cecil Prowse, the 49-year-old captain of the HMS Queen Mary, which was sunk at the Battle of Jutland on 31 May 1916 and Brigadier-General Bertie Prowse, who was killed in the Battle the Somme, aged 47, just a month later. Exit and walk around to the other side of the church and to a row of white cottages in front of you. Take the path to the right in front of the cottages - Church Terrace - go down the steps and turn left into Silver Street. Then turn left into Court Ash, walk 100 yards, then go around the old cinema building and up steps to Reckleford (a busy dual carriageway). Turn right and go on for 200 yards. As you walk down, with the old cattle market (closed 2008) to your right, you can see in the distance the distinctive lime trees on the top of Wyndham Hill. On the other side of the road, past the traffic lights, is a bus depot which was the site of:

8 Nautilus Works Originally built by Petters to make stoves it later incorporated Westland aircraft and during the Great War teams of women produced munitions for the war effort (see picture overleaf). Turn right by fish and chip shop into Market Street and back towards the church and then left into Silver Street and, when back at the war memorial, turn left into:



9 Middle Street Where in 1914 volunteers mustered and marched to the Town Station and off to war (above). Follow in the recruits' footsteps and walk past the shops for 600 yards, past the William Dampier pub and straight on at the lights. After 50 yards turn right into Newton Road and, on the opposite corner, is:

10 The Western Gazette building Built in 1906 it reported news of the war - and the terrible loss of human life - to the people of Yeovil. Then, 50 yards on the left, opposite Newton Lodge (a former toll house), go through kissing gate and, unless you want to take a short cut (see map), take a steep climb up to:

11 Wyndham Hill Joyous celebrations of Peace Day on 19 July 1919 were held here. On top there are lovely views of Yeovil and surrounding countryside, including - to the east - Babylon Hill (site of a Civil War skirmish in 1642). Walk back down hill and cross to the left, through a gate and down steps to a large car park. Follow the perimeter path around the Yeo Leisure Park, which stands on the site (pictured overleaf) of the old:

12 Yeovil Town Railway Station which closed in the 1960s. For an extra climb and viewpoint go up Summerhouse Hill, to your left (where a firework display marked the end of the First World War). Otherwise keep leisure centre on your right and, at end of car park, follow path to left of block of flats (once a gloving factory). Then follow scenic path for 1,200 yards that follows the:

13 Old railway line from which volunteers would have had their last views of Yeovil as they went off to war. Keep right at the Ninesprings car park and just past café and swimming pool turn right up path to roundabout and on your left is:

14 The Railway Hotel which was once run by the father of Wally Adams (our cover portrait). Turn right to cross Brunswick Street at the lights by Coopers Mill and walk 250 yards up Hendford before turning right and back to your starting point.

Visit Us

01935 462855

This walk guide was produced by staff and volunteers at the South Somerset Heritage Collection (SSDC Lufton Depot, 7 Artillery Road, Yeovil, BA22 8RP). All pictures and objects featured in this leaflet are part of our collection of over 5,000 images and 30,000 artefacts covering all aspects of South Somerset's history and heritage.

To view the collection (which is only open to the public by prior appointment) contact us by phone or email: heritageservices@southsomerset.gov.org. For more details check out our website: southsomsetheritage.gov.org

This walk leaflet was produced with the aid of a £300 grant awarded by South West Museum Development Programme using funds from Arts Council England.



Supported using public funding by
**ARTS COUNCIL
ENGLAND**



**South Somerset
District Council**

First glimpses Yeovil during the Great War and beyond



A fascinating 3.3-mile walk into the past, taking in the monuments and sites of the First World War at home plus objects from the South Somerset Heritage Collection.



A walk into history

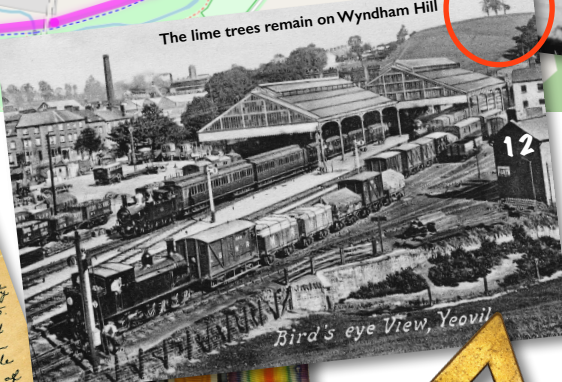
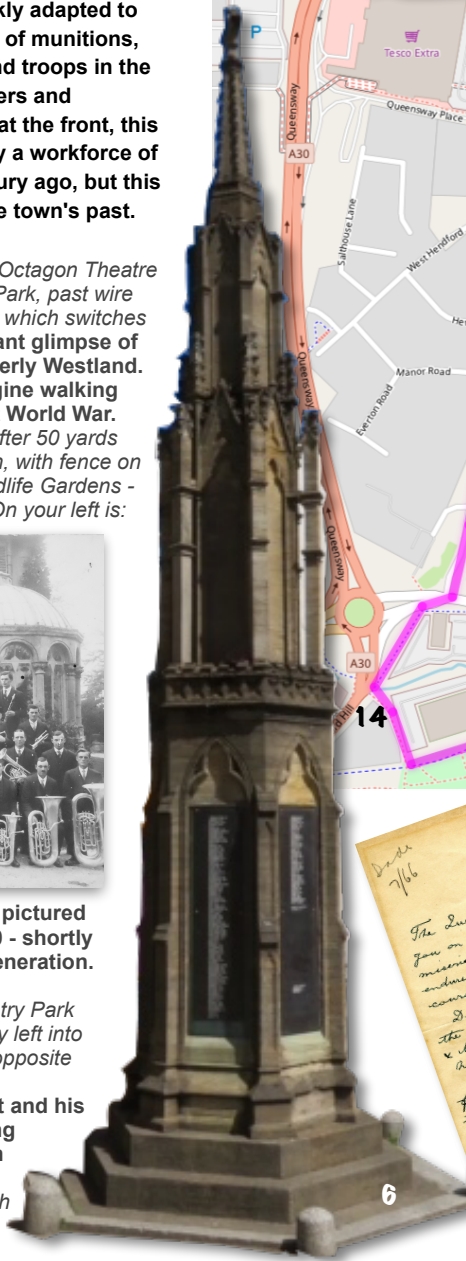
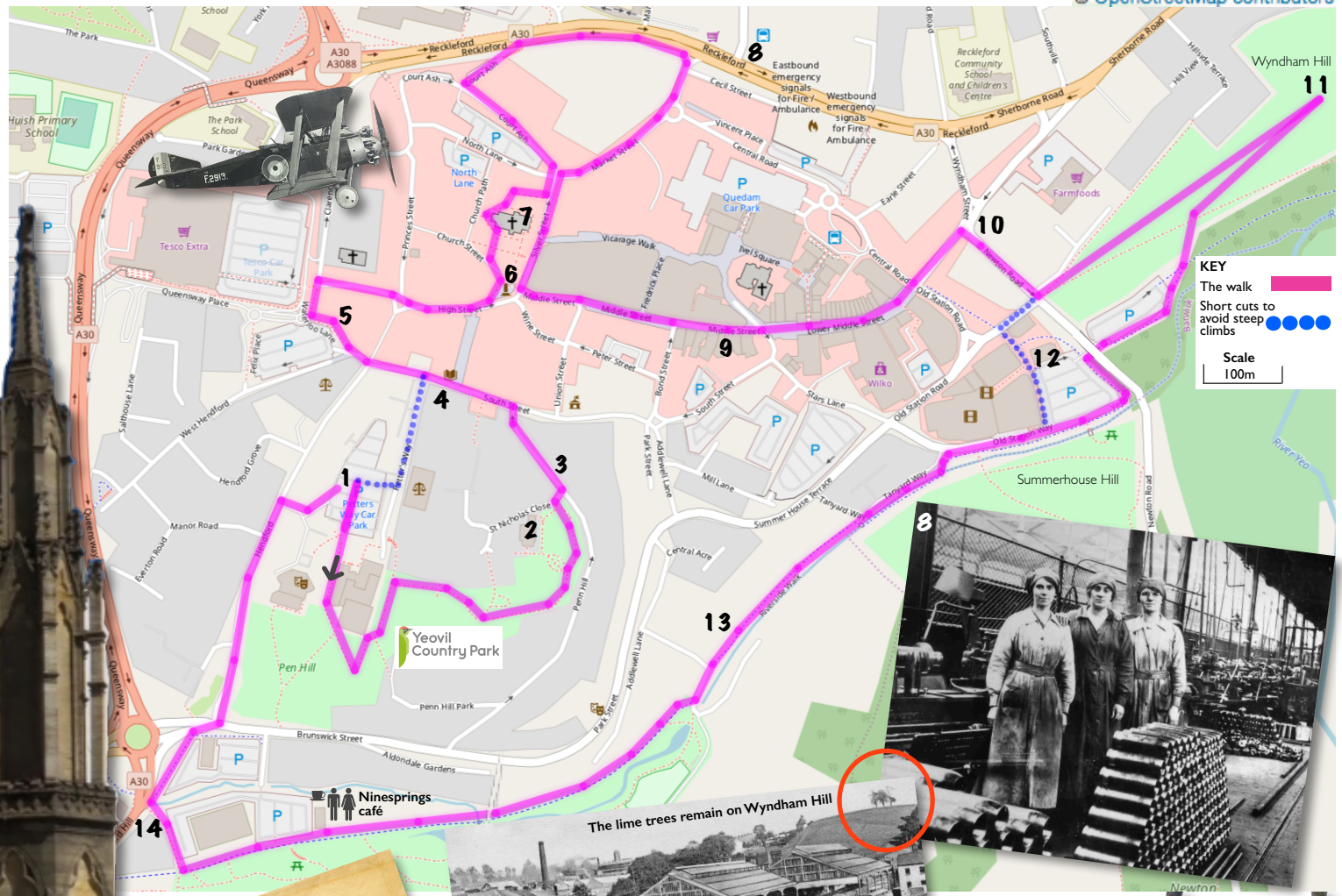
When the First World War broke out in August 1914 the men of Yeovil - like thousands of others up and down the country - rushed to volunteer for military service. Meanwhile, the town that had long been a centre for the gloving and engineering industries quickly adapted to service the war effort - to the production of munitions, aircraft, even special gloves for pilots and troops in the trenches. Local companies such as Petters and Westland led the way and, with the men at the front, this important role was undertaken largely by a workforce of women. Today little remains from a century ago, but this walk offers a fascinating glimpse into the town's past.

1 Park at Petters Way car park With the Octagon Theatre on your right take path into Yeovil Country Park, past wire sculpture "Introspection" then left uphill fork which switches back. Through trees to the west is a distant glimpse of the Leonardo Helicopters complex, formerly Westland. Leaving modern Yeovil behind you, imagine walking back in time to the years before the First World War. Turn left alongside elevated car park then after 50 yards take uphill path through trees. At top of path, with fence on your right - ignoring path to Community Wildlife Gardens - follow path down hill and round to the left. On your left is:



2 Penn Hill House A fine Victorian villa, pictured above with the Yeovil Town Band in 1910 - shortly before the horrors of war decimated a generation. (The cupolas are no longer on the roof). Continue on path and turn right out of Country Park into St Nicholas Close and then immediately left into Penn Hill where the cream building on the opposite side of the road is:

3 Penn Villa Once home to William Hunt and his son, pioneering dentists who were among the first to use ether as an anaesthetic in 1847. It is still a dental surgery today. Continue along road and turn left onto South Street. About 100 yards on the left is:



The lime trees remain on Wyndham Hill



Poignant reminders
Wally Adams' identity tag, the medals of Private L H Maynard and a letter of thanks from the King all reflect the sacrifice made by the men of Yeovil.

The triangular "On War Service" brooch was awarded to women whose vital work came on the home front, producing armaments and aircraft such as - on the map above - the Westland Weasel.

